

RTEX Network Motion Controller

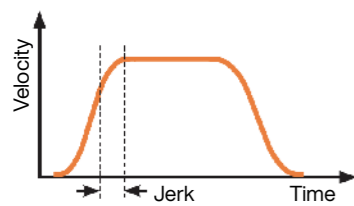
PMC-KM2500P



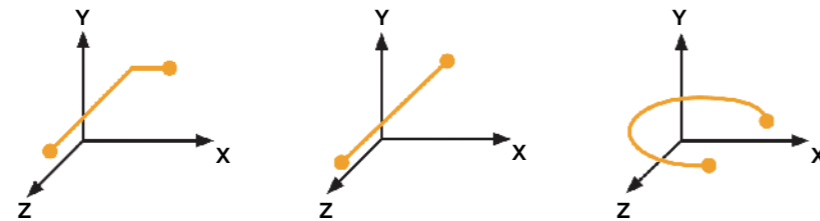
Features

- RTEX (Realtime Express) Network
- PCI Interface
- Max. 16 Axes
- Max. 32 Nodes
- Multi-Axes Motion
- Linear / Circular Interpolation
- Synchronous Control, Gantry Control
- 1D / 2D Position Error Compensation
- Motion API
- Controller Setup Software
- High Speed, High Precision and High Performance
- Very Simple and Easy to Develop Applications

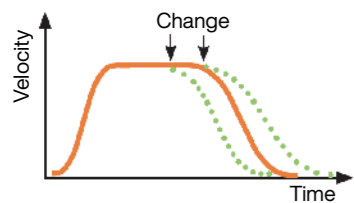
Velocity Profile



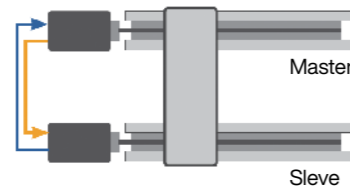
Motion Command



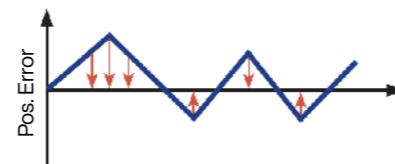
Change of Command



Gantry Control



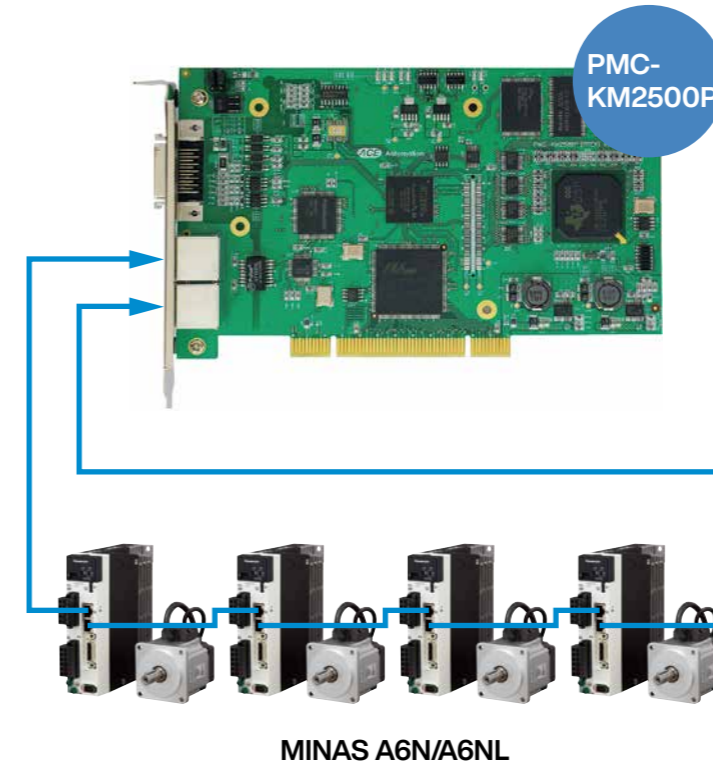
Position Error Compensation



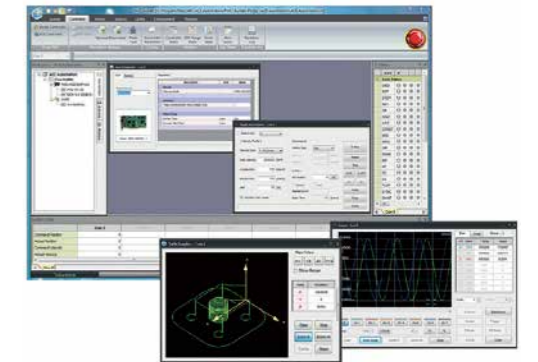
Application Sample

- Semiconductor / FPD Equipment
- Industrial Robot
- Machine Tool
- Other Industrial Equipment

System Configuration



Controller Setup Software



- Controller / Device / Motion Configuration
- Single / Multi / Coordinate Motion
- Path Graph, Realtime Scope
- Servo Configuration
- Monitoring, Diagnosis

Sales area

- Korea
- Japan
- United States of America
- China

Language

- Korean
- Japanese
- English
- Chinese

For more information

URL : <http://www.aceautomation.co.kr>



Contact: ACE Automation Co., Ltd.

Complex-701, Heungdeok IT Valley, 13, Heungdeok 1-Ro, Giheung_Gu, Yongin-Si, Gyeonggi-Do, 16954, Korea

TEL: +82-31-340-1580 FAX: +82-31-340-1581